



# **SPRING**

## SWATCHES

2025

CATALOGUE

Discover our proposal  
for your 2025 collection

## Knitwear Capability



### CABLE MOSS STITCH

The simplicity and delicacy of moss stitch combined with interlaced stitch creates a versatile finish.



### 3D KNITWEAR

A stitch pattern that incorporates three-dimensional elements to add depth and visual interest to the knit fabric.



### OPENWORK MIX

A mix of openwork stitching patterns, creating a versatile and trendy garment.



### TERRY JACQUARD

Terry jacquard represents the fusion of advanced knitting technology with the comfort and practicality of terry, resulting in fabrics that are both visually striking and luxuriously soft.



### FLOATING YARN

A textured stitch with floating yarn that creates a textured surface and adds a dynamic quality to the knit.



### RAINBOW BRUSHED

A jersey knit with a brushed finish where the different colours intertwine to create a dynamic and vibrant finished garment.

Discover the types of garments where you can use these knitwear techniques in your next spring collection.



Cardigan



Sweater



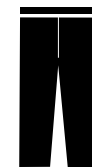
Vest



Top



Dress



Trousers



Skirt



## SPRING SWATCH N°1

CABLE MOSS STITCH

**CODE:** 680Z669M0000

### COMPOSITION

100% TANGUIS COTTON

100% PIMA COTTON

### APPLIANCES





**SPRING SWATCH N° 2**  
HALF CARDIGAN WITH LUREX

**CODE:** 680Z668M0000

**COMPOSITION**  
100% TANGUIS COTTON  
+ LUREX

**APPLIANCES**





**SPRING SWATCH N° 3**  
CABLE OPENWORK STITCH

**CODE:** 680Z661M0000

**COMPOSITION**

100% TANGUIS COTTON  
+ 60% BABY ALPACA  
35% NYLON 5% WOOL

**APPLIANCES**





**SPRING SWATCH N°4**  
3D STRUCTURED STITCH

**CODE:** 680Z655M0000

**COMPOSITION**  
100% PIMA COTTON

**APPLIANCES**





**SPRING SWATCH N° 5**  
FLOATING YARN STRUCTURED STITCH

**CODE:** 610Z651M0000

**COMPOSITION**

100% PIMA COTTON +  
60% BABY ALPACA  
35% NYLON 5% WOOL

**APPLIANCES**





**SPRING SWATCH N° 6**  
I-PLATING TWO TONES JACQUARD

**CODE:** 680Z662M0000

**COMPOSITION**  
100% PIMA COTTON

**APPLIANCES**





**SPRING SWATCH N° 7**  
COLOUR STRIPES OPENWORK STITCH

**CODE:** 680Z660M0000

**COMPOSITION**  
100% PIMA COTTON

**APPLIANCES**





**SPRING SWATCH N° 8**  
STRUCTURED OPENWORK STITCH

**CODE:** 680Z665M0000

**COMPOSITION**  
100% PIMA MERCERIZED

**APPLIANCES**





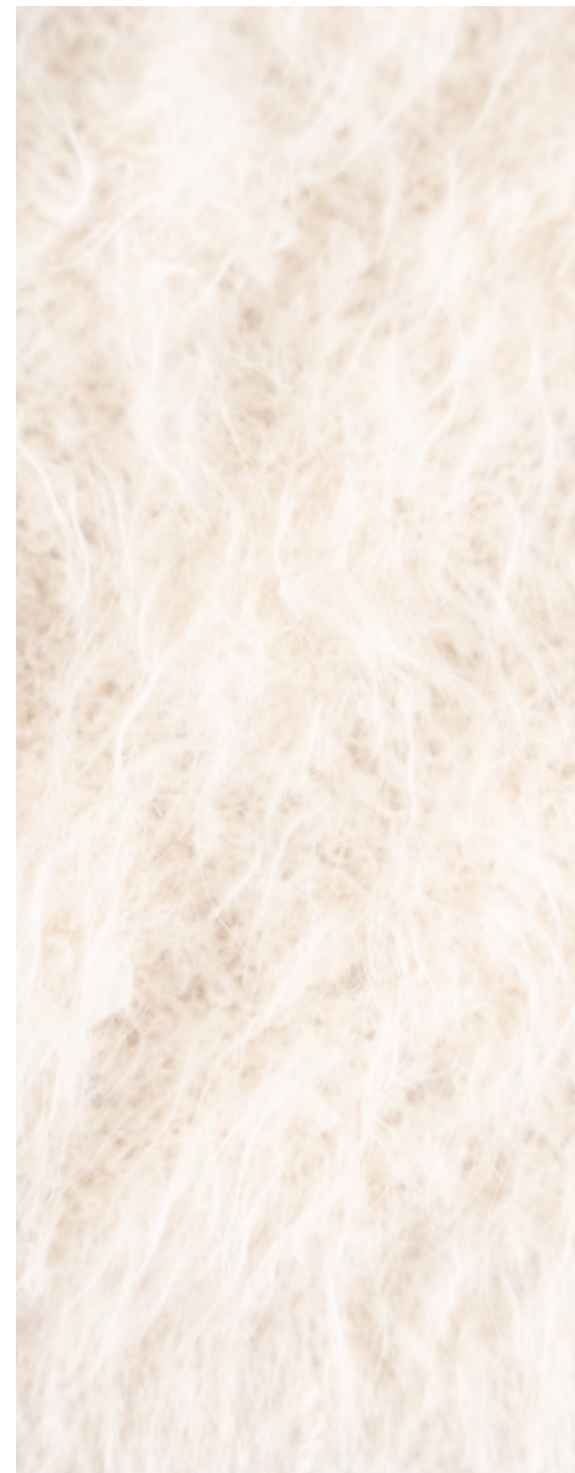
**SPRING SWATCH N° 9**  
STRUCTURED BRUSHED DIAMOND STITCH

**CODE:** 630Z667M0000

**COMPOSITION**

100% PIMA COTTON +  
87% SURI ALPACA  
13% NYLON

**APPLIANCES**





**SPRING SWATCH N° 10**  
DOUBLE KNIT JACQUARD

**CODE:** 680Z663M0000

**COMPOSITION**

100% PIMA COTTON  
100% PIMA MERCERIZED

**APPLIANCES**





**SPRING SWATCH N° 11**  
STRUCTURED BRUSHED JACQUARD

**CODE:** 630Z672M0000

**COMPOSITION**

100% PIMA COTTON +  
87% SURI ALPACA  
13% NYLON

**APPLIANCES**





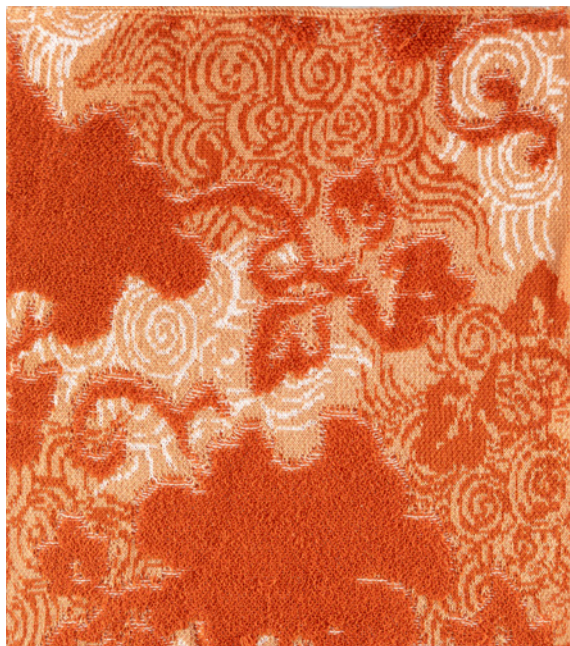
**SPRING SWATCH N° 12**  
RAINBOW BRUSHED JERSEY STITCH

**CODE:** 680Z676M0000

**COMPOSITION**  
100% PIMA COTTON  
87% SURI ALPACA  
13% NYLON

**APPLIANCES**



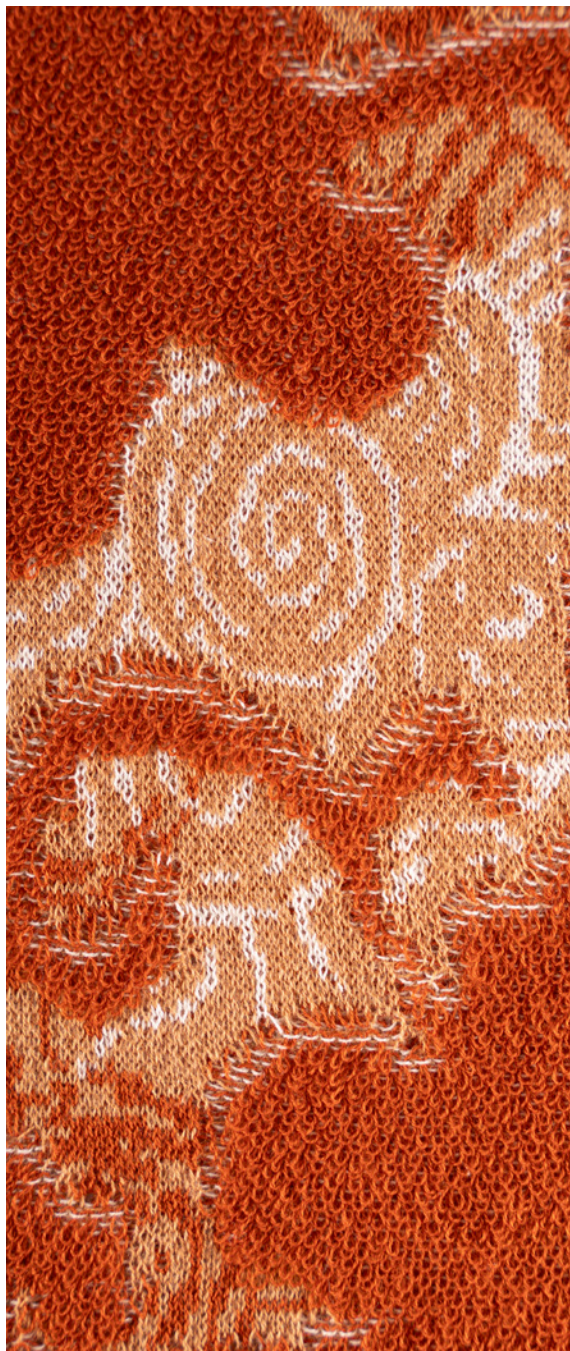


**SPRING SWATCH N° 13**  
TERRY JACQUARD

**CODE:** 680Z675M0000

**COMPOSITION**  
100% PIMA COTTON

**APPLIANCES**





**SPRING SWATCH N° 14**  
FLORAL OPENWORK ON JERSEY

**CODE:** 680Z678M0000

**COMPOSITION**  
100% PIMA COTTON

**APPLIANCES**

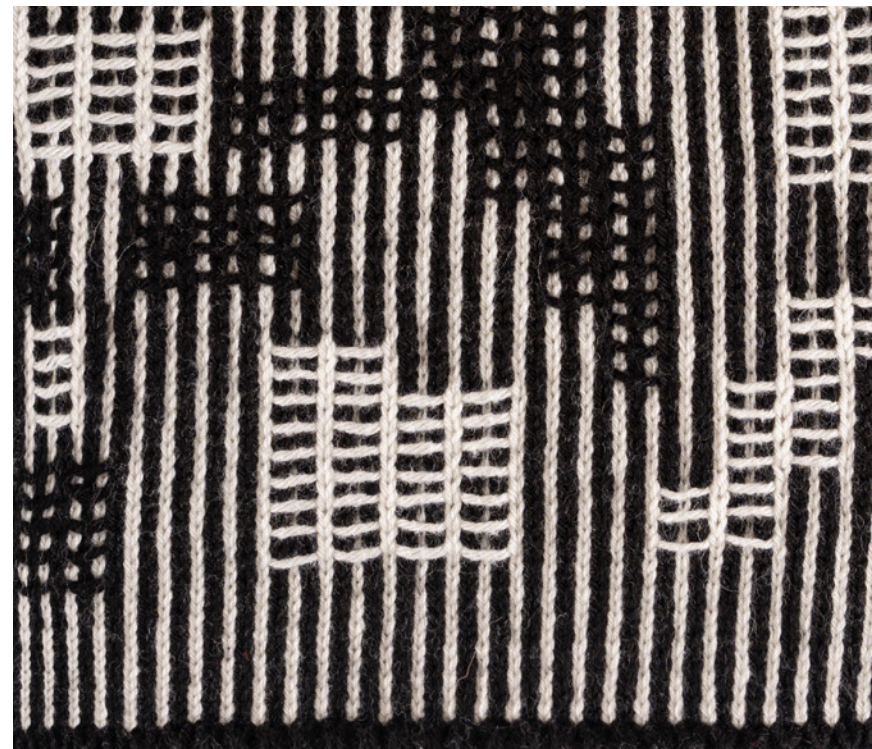
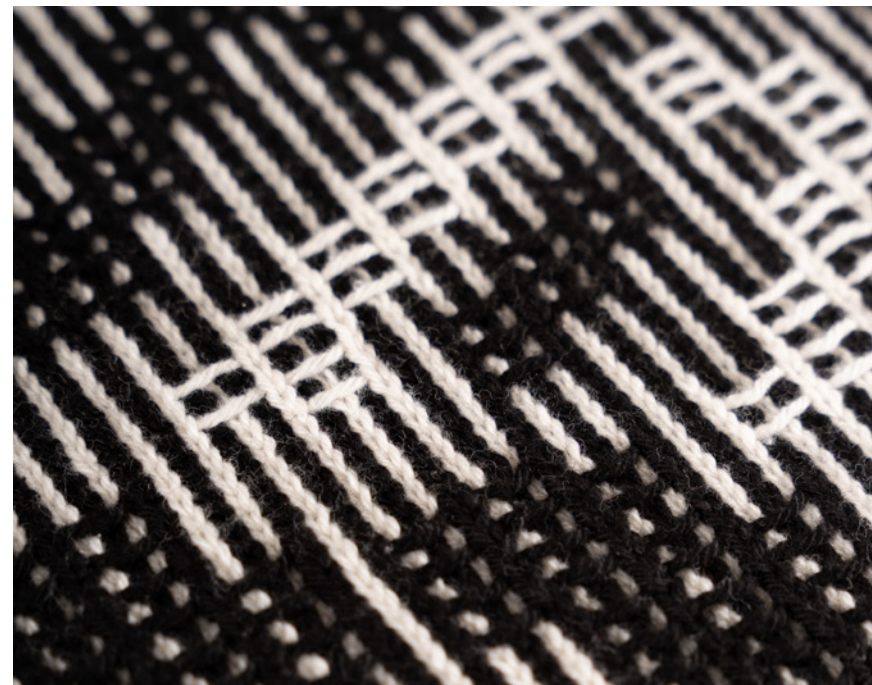
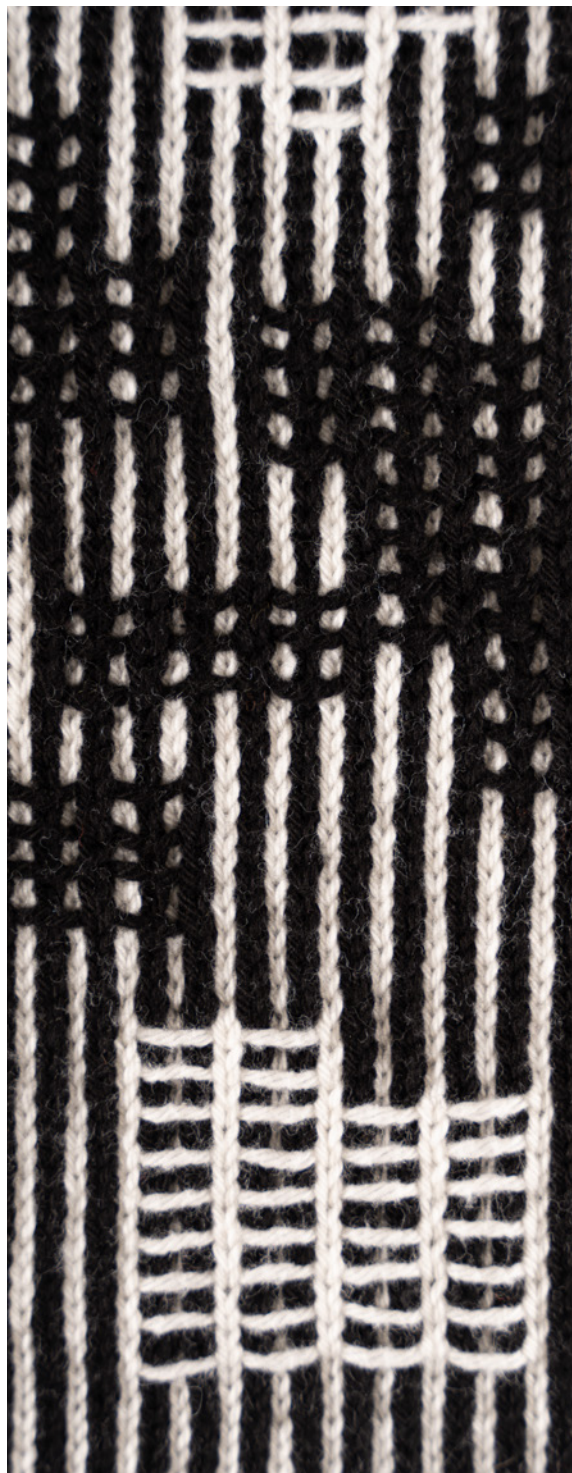


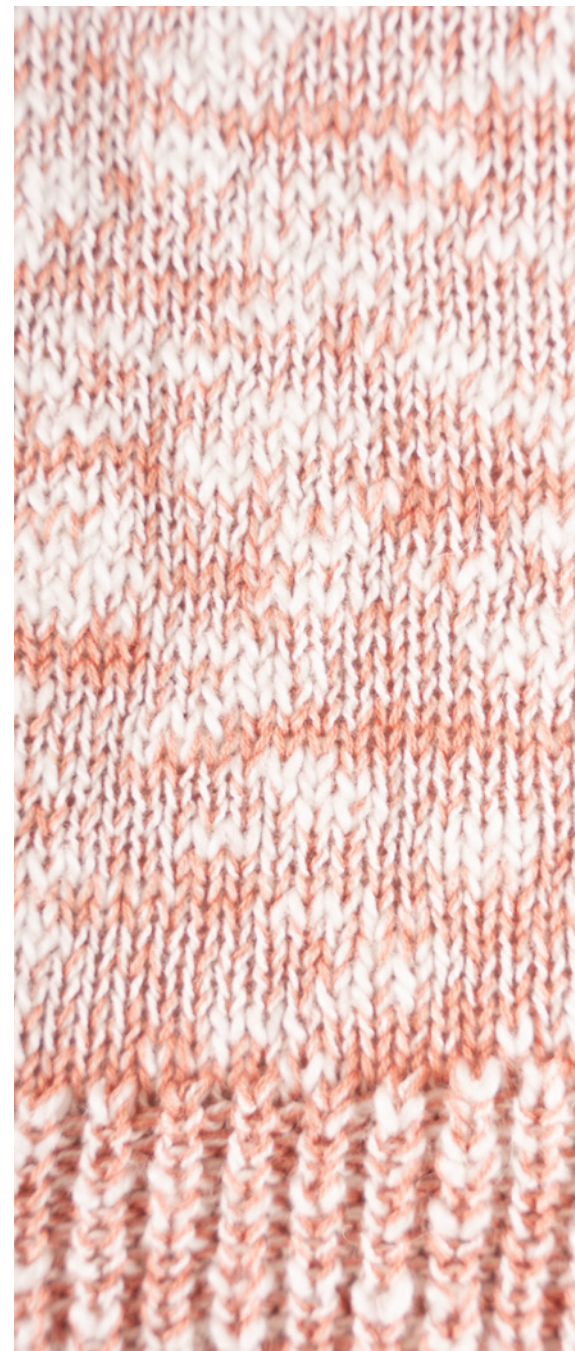
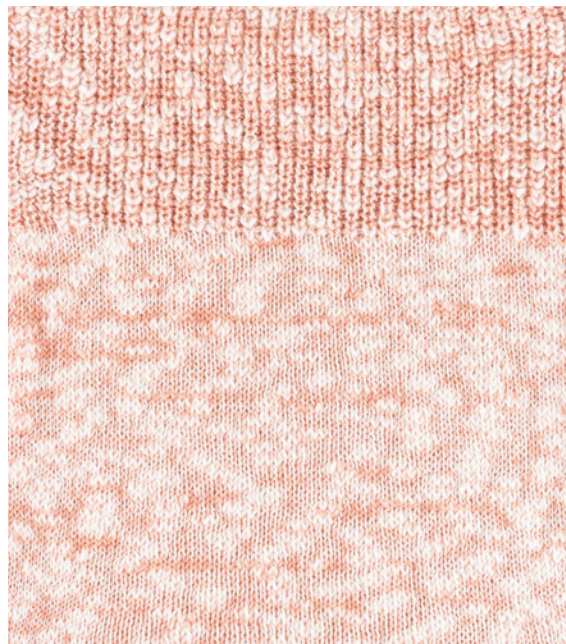
**SPRING SWATCH N° 15**  
STRUCTURED FLOATING STITCH

**CODE:** 680Z679M0000

**COMPOSITION**  
100% TANGUIS COTTON

**APPLIANCES**





**SPRING SWATCH N° 16**  
HALF CARDIGAN AND JERSEY STITCH

**CODE:** 680Z683M0000

**COMPOSITION**  
100% TANGUIS FLAME  
100% PIMA COTTON

**APPLIANCES**





**SPRING SWATCH N° 17**  
JACQUARD WITH CABLE KNIT

**CODE:** 680Z743M0000

**COMPOSITION**

50% TANGUIS

50% VISCOSE

100% TANGUIS FLAME

**APPLIANCES**





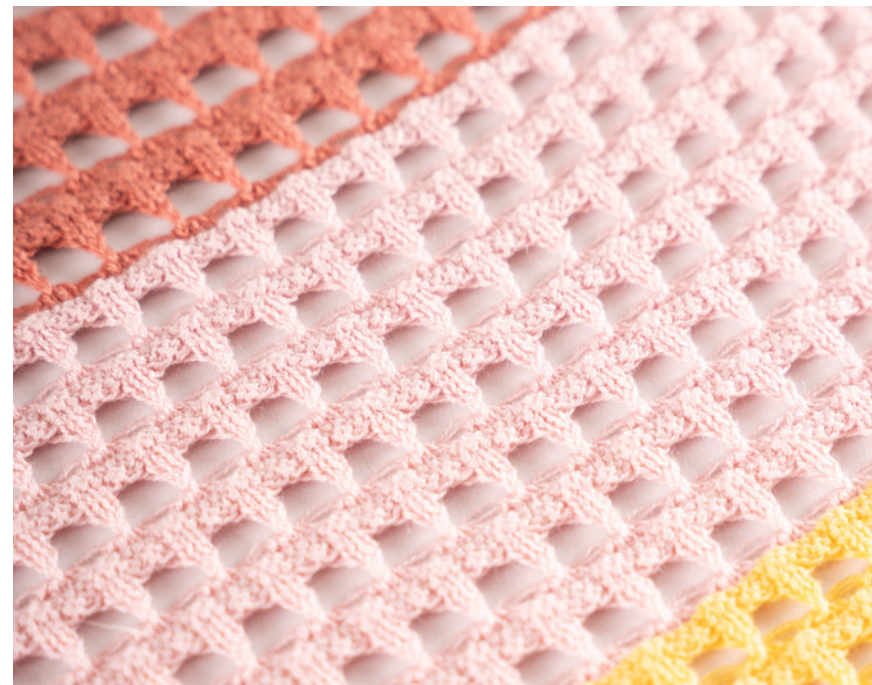
**SPRING SWATCH N° 18**  
COLOUR OPENWORK STITCH

**CODE:** 680Z725M0000

**COMPOSITION**

100% PIMA COTTON  
50% TANGUIS 50% VISCOSE  
85% PIMA COTTON 15% SILK

**APPLIANCES**





**SPRING SWATCH N° 19**  
TWO TONE FLOWERED OPENWORK

**CODE:** 680Z735M0000

**COMPOSITION**  
50% TANGUIS  
50% VISCOSE

**APPLIANCES**





**SPRING SWATCH N° 20**  
STRUCTURED BRICKED STITCH

**CODE:** 680X021M0000

**COMPOSITION**  
100% PIMA COTTON

**APPLIANCES**





**SPRING SWATCH N° 21**  
STRUCTURED LOOP STITCH

**CODE:** 680X826M0000

**COMPOSITION**  
100% PIMA COTTON  
100% TANGUIS COTTON

**APPLIANCES**



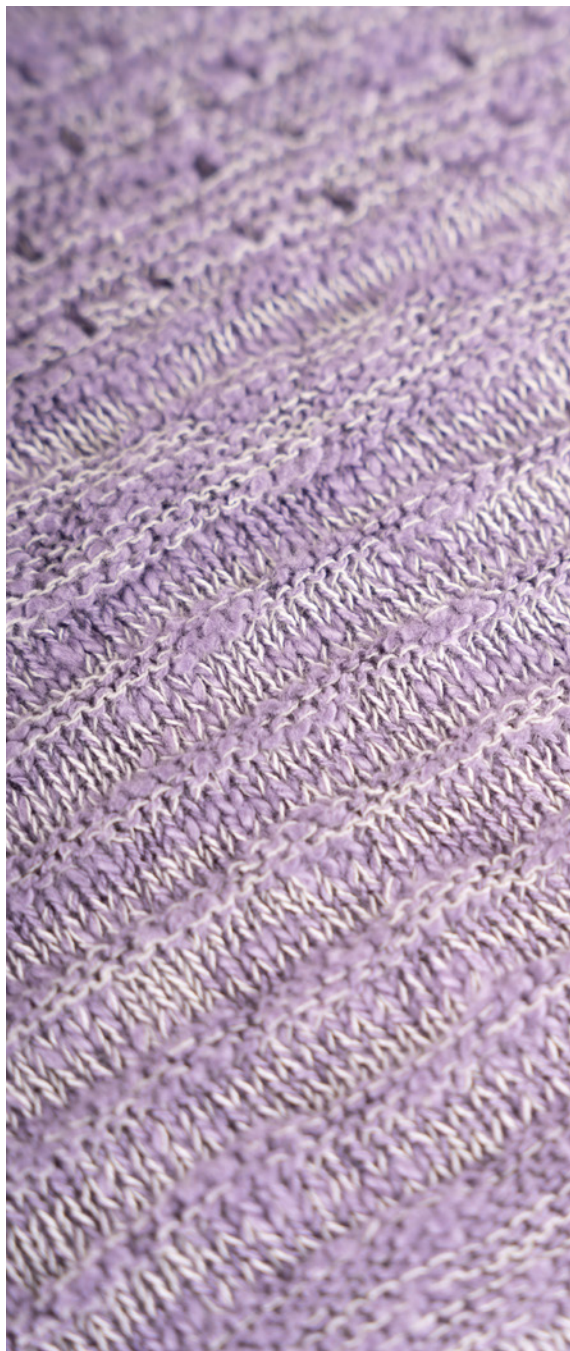


**SPRING SWATCH N° 22**  
STRIPED STRUCTURED STITCH

**CODE:** 680Z749M0000

**COMPOSITION**  
100% PIMA COTTON  
100% COTTON FLAME

**APPLIANCES**





**SPRING SWATCH N° 23**  
WAVY COLORFUL STRUCTURED STITCH

**CODE:** 680Z754M0000

**COMPOSITION**  
100% PIMA COTTON

**APPLIANCES**





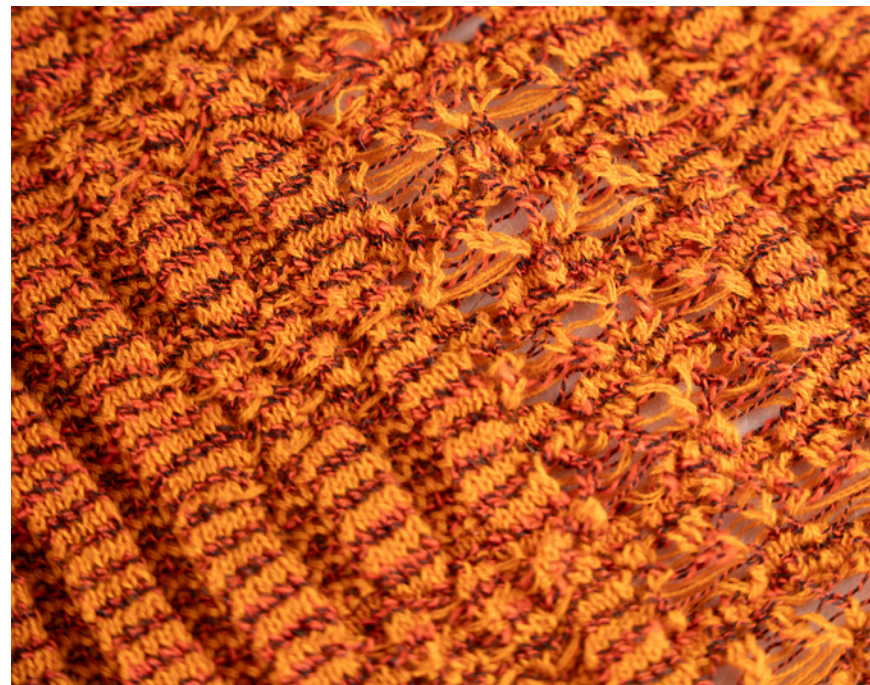
**SPRING SWATCH N° 24**  
OPENWORK STRUCTURED 3D STITCH

**CODE:** 680Z753M0000

**COMPOSITION**

100% PIMA COTTON +  
66% COTTON  
34% POLYESTER

**APPLIANCES**





**SPRING SWATCH N° 25**  
OPENWORK STITCHING MIX

**CODE:** 680Z758M0000

**COMPOSITION**  
100% PIMA COTTON

**APPLIANCES**



# FACTORY CERTIFICATIONS



WRAP certification is recognised around the world as proof of social compliance in the apparel industry. WRAP ensures that our factory operate in a safe, responsible and ethical manner.



Peru Carbon Footprint is an official tool of the Peruvian government that recognises how public and private organisations manage their greenhouse gas (GHG) emissions for the benefit of the environment.



BASC certification is designed to secure and facilitate international trade based on trust and confidence by confirming the control work carried out in all production, packing, shipping and transport processes.



Bio Trade Peru confirms that the certified company operates according to the Bio Trade model, with mechanisms for the conservation and sustainable use of biodiversity through a sustainable chain.



This certification confirms our commitment to principles such as opportunities for disadvantaged producers, transparency, fair trade practices, promotion of fair trade and respect for the environment.



INCALPACA

INCALPACA TPX S.A.

Calle Cóndor 100, Sachaca Arequipa- Perú  
T-51 54 603000

**Juan Pablo Rivera**

Commercial Director  
jprivera@incalpaca.com

**Andrea Chiappe**

Knitwear Division Sales Manager  
achiappe@incalpaca.com

incalpaca.com

