



**SPRING**

HOME LINE

2025

CATALOGUE

DISCOVER OUR PROPOSAL  
FOR YOUR 2025 COLLECTION

---

HOME LINE **CAPABILITY**



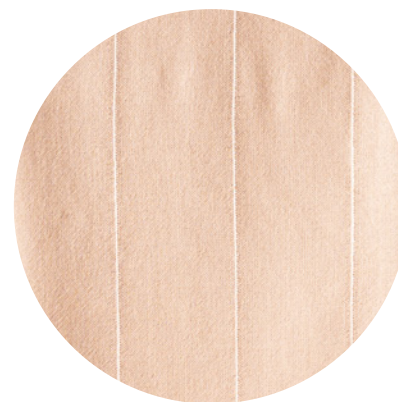
**HERRINGBONE**

A distinctive pattern characterised by a series of V's. This creates a zig-zag pattern that is visually appealing and adds texture to the fabric.



**BRODERY**

A modern twist on a traditional technique, the fine finishes throughout the blanket demonstrate the true art of embroidery.



**THICK & THIN**

A specific type of weave that has variations in thickness throughout its structure. This irregularity creates a visually interesting effect that adds depth to the finish.



**RELIEVES**

By using a variety of colours and fibres, different patterns can be created along the blanket, resulting in a series of reliefs that are attractive to the naked eye and hand feel.



## SPRING 2025 FIBRES PROPOSAL



### LINEN

A sustainable and eco-friendly choice, renowned for its durability, breathability, natural lustre, distinctive texture and timeless elegance, offering comfort in warm environments.



### BABY ALPACA

Baby Alpaca is the fibre obtained from the first shearing in the life of an alpaca and is the most valuable and prized of all.



### COTTON

Valued for its versatility, breathability, comfort and durability. A renewable and biodegradable resource, cotton remains a cornerstone of the textile industry.



### NATIVE COTTON

With an antiquity of more than 5000 years in our country, this natural fibre makes it possible to create garments of a unique colour without the need for any type of dyeing. .





# **WATER LESS**

As part of our commitment to the environment, we have developed a process that reduces the use of water in product finishing by 68.5%. Reducing energy consumption and CO2 emissions.

All of the products in this catalogue are waterless.



# FACTORY CERTIFICATIONS



WRAP certification is recognised around the world as proof of social compliance in the apparel industry. WRAP ensures that our factory operate in a safe, responsible and ethical manner.



Peru Carbon Footprint is an official tool of the Peruvian government that recognises how public and private organisations manage their greenhouse gas (GHG) emissions for the benefit of the environment.



BASC certification is designed to secure and facilitate international trade based on trust and confidence by confirming the control work carried out in all production, packing, shipping and transport processes.



Bio Trade Peru confirms that the certified company operates according to the Bio Trade model, with mechanisms for the conservation and sustainable use of biodiversity through a sustainable chain.



This certification confirms our commitment to principles such as opportunities for disadvantaged producers, transparency, fair trade practices, promotion of fair trade and respect for the environment.





## **PURE**

A natural category,  
made exclusively from  
natural fibres in their  
natural colours, without  
any dyeing process.



## BICOLOR STRIPED

Embossed striped throw with twisted fringes

**CODE:** M10582DM0100

**COMPOSITION**  
100% Baby Alpaca

**WIDTH**  
130 x 180cm.

**WEIGHT**  
310gr.



**TEXTILE TECHNIQUE:**  
Thick & Thin



XXC0001



XXC0002



XXC0003



## ECO SCALES

Eco-structured throw with twisted fringes

**CODE:** M10586EM0100

COMPOSITION	WIDTH	WEIGHT
100% Baby Alpaca	130 x 180cm.	335gr.

 **TEXTILE TECHNIQUE:**  
Structured



XXC0001



XXC0002



XXC0003





XXC0001



XXC0002



XXC0003

## IRREGULAR STRIPED

Striped eco throw with twisted fringes

**CODE:** M10589DM0100

COMPOSITION	WIDTH	WEIGHT
65% Baby Alpaca 35% Linen	130 x 180cm.	440gr.



**TEXTILE TECHNIQUE:**  
Irregular Herringbone



## EMBOSSED JACQUARD

Jacquard eco throw with twisted fringes

**CODE:** M20564EM0100

COMPOSITION	WIDTH	WEIGHT
54% Baby Alpaca 23% Native Cotton 23% Tanguis Cotton	130 x 180cm.	370gr.

 **TEXTILE TECHNIQUE:**  
Relieves



XXC0001



XXC0001



XXC0002

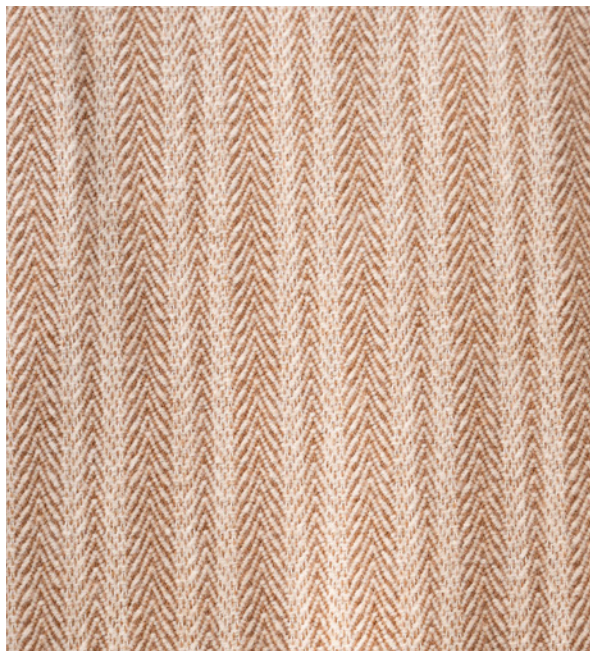




## **MOTHER EARTH**

Inspired by the  
Pachamama, our designs  
seek to represent her  
diversity as a tribute to  
her beauty.





XXC0001



XXC0002

## RUSTIC HERRINGBONE

Striped herringbone throw with twisted fringes

**CODE:** M10566DM0200

COMPOSITION	WIDTH	WEIGHT
50% Baby Alpaca 45% Cotton	130 x 180cm.	550gr.

 **TEXTILE TECHNIQUE:**  
Herringbone Structured



XXC0003





XXC0001

## TEXTURE STRIPED PATTERN

Vertically striped throw with twisted fringes

**CODE:** M10581DM0100

**COMPOSITION**  
100% Baby Alpaca

**WIDTH**  
130 x 180cm.

**WEIGHT**  
490gr.



**TEXTILE TECHNIQUE:**  
Vertical Striped Structure



XXC0002



XXC0003



TEXTURED PATTERN

Horizontal striped throw with twisted fringes

CODE: M10581DM0200

COMPOSITION	WIDTH	WEIGHT
100% Baby Alpaca	130 x 180cm.	490gr.



TEXTILE TECHNIQUE:  
Horizontal Striped Structure



XXC0001



XXC0002



XXC0003



## BRODERY JACQUARD

Lightweight throw with fringes

**CODE:** M10584DM0100

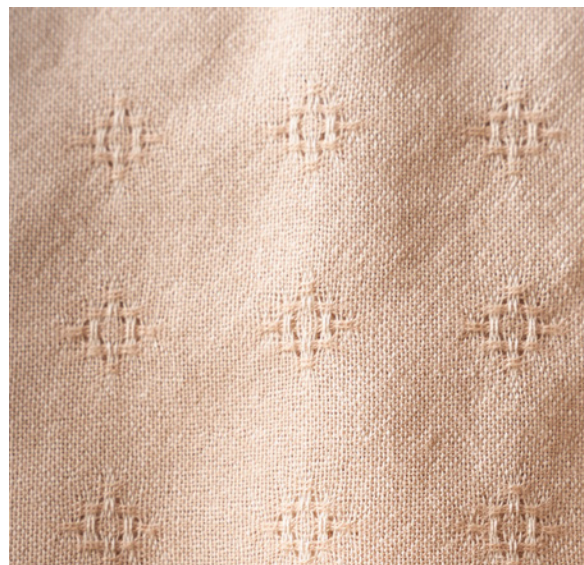
COMPOSITION	WIDTH	WEIGHT
100% Baby Alpaca	130 x 180cm.	335gr.



**TEXTILE TECHNIQUE:**  
BroderY



XXC0002



XXC0001



XXC0003



XXC0004





XXC0001

## BRUSHSTROKE JACQUARD

Jacquard throw with twisted fringes

**CODE:**M10585DM0100

**COMPOSITION**  
100% Baby Alpaca

**WIDTH**  
130 x 180cm.

**WEIGHT**  
420gr.



**TEXTILE TECHNIQUE:**  
Jacquard



XXC0002



XXC0003



DIAGONAL WEAVE

Diagonal throw with twisted fringes

CODE:M80045DM0200

COMPOSITION  
15% Baby Alpaca  
85% Cotton

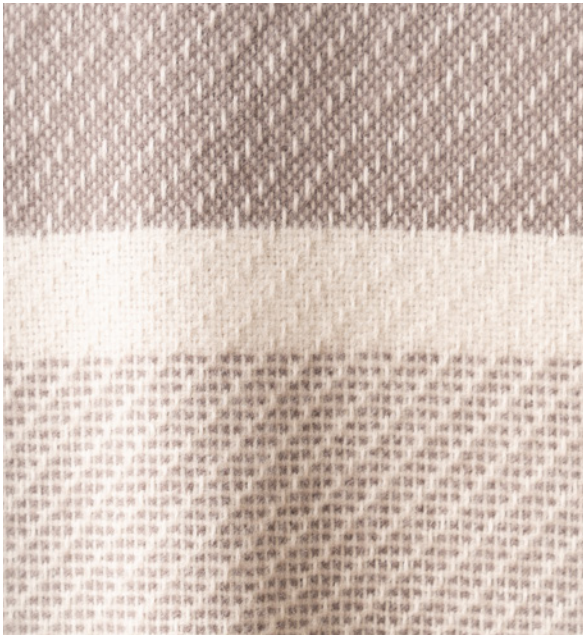
WIDTH  
130 x 180cm.

WEIGHT  
570gr.

 TEXTILE TECHNIQUE:  
Diagonal Textured



XXC0001



XXC0002



XXC0003



## WHAT MAKES ALPACA GARMENTS **SO UNIQUE?**



Excellent appearance  
and durability



Efficient humidity  
absorption



Incredibly soft  
touch



High performance in  
extreme weather  
conditions





FIND OUT WHY **WE LOVE USING**  
**ALPACA FIBRE** IN OUR PRODUCTS.

---



DISCOVER **PACOMARCA**

Our scientific research station dedicated to the genetic  
improvement of the alpaca.

---







INCALPACA

INCALPACA TPX S.A.  
Calle Cóndor 100, Sachaca Arequipa- Perú  
T-51 54 603000

**Juan Pablo Rivera**  
Commercial Director  
jprivera@incalpaca.com

**Claudia Fuentes**  
Woven Division Sales Manager  
cfuentes@incalpaca.com

[incalpaca.com](http://incalpaca.com)

