



SPRING

FABRICS

2025

CATALOGUE

WHAT FIBRES YOU WILL FIND IN **OUR PROPOSAL**



SILK

Known for its softness, smooth texture and natural lustre. Silk is renowned for its lightness and breathability, making it comfortable in both hot and cold climates.



WOOL

A renewable and ecological fibre, made up of natural waves and curls, it is strong and durable, making the garment last longer.



BABY ALPACA

Our fibre par excellence, ideal for every season. Recognised for its multiple properties and its sustainable origin. In addition to its versatility to provide a unique finish to each piece.



BAMBOO

A highly renewable and environmentally friendly natural fibre that offers a combination of softness, breathability and sustainability, ideal for warm climates.



NYLON

Synthetic fibre with high versatility, strength, elasticity and durability, ideal for giving a comfortable structure to any garment.

FACTORY CERTIFICATIONS



WRAP certification is recognised around the world as proof of social compliance in the apparel industry. WRAP ensures that our factory operate in a safe, responsible and ethical manner.



Peru Carbon Footprint is an official tool of the Peruvian government that recognises how public and private organisations manage their greenhouse gas (GHG) emissions for the benefit of the environment.



BASC certification is designed to secure and facilitate international trade based on trust and confidence by confirming the control work carried out in all production, packing, shipping and transport processes.



Bio Trade Peru confirms that the certified company operates according to the Bio Trade model, with mechanisms for the conservation and sustainable use of biodiversity through a sustainable chain.



This certification confirms our commitment to principles such as opportunities for disadvantaged producers, transparency, fair trade practices, promotion of fair trade and respect for the environment.



08A0384



09A0053



0080001

GABARDINA

A tightly woven, full-colour fabric that is soft to the touch, comfortable in a variety of climates, breathable and waterproof, ideal for outerwear.

CODE: 110188EP00000

COMPOSITION
70% Wool
30% Baby Alpaca

WIDTH
150cm.

WEIGHT
410gr.



XXC0001

WORN EFFECT JACQUARD

Ideal for creating fresh and light garments, its smooth texture simulates the look of worn fabrics.

CODE: A100071M02000

COMPOSITION
52% Bamboo
34% Baby Alpaca
14% Silk

WIDTH
150cm.

WEIGHT
295gr.



XXC0002



XXC0003

HIGHLIGHT BOUCLE PLAID

A lighter version of tweed that retains its roughness, softness and classic aesthetic. Its typical mottled finish is achieved by using different coloured yarns.

CODE: 110227AM01000

COMPOSITION
61% Baby Alpaca
23% Silk
15% Wool
1% Nylon

WIDTH
150cm.

WEIGHT
400gr.



XXC0001



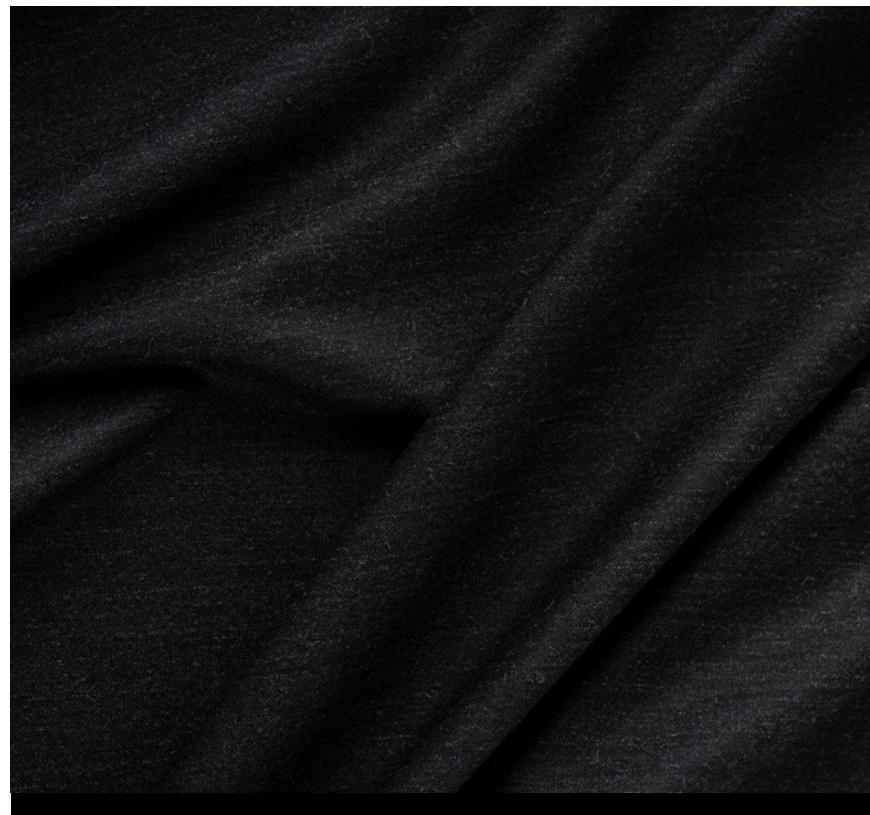
XXC0002



XXC0003



XXC0001



CASIMIR

A very fine, smooth and lightweight fabric, perfect for sophisticated and elegant garments.

CODE: 110202DP01000

COMPOSITION
30% Baby Alpaca
70% Wool

WIDTH
150cm.

WEIGHT
270gr.



XXC0001

SOFT LEAF

A leaf patterned fabric with a smooth texture, ideal for creating casual, fresh and dynamic garments.

CODE: 1102261P04000

COMPOSITION
70% Baby Alpaca
30% Silk

WIDTH
175cm.

WEIGHT
400gr.





530014



350035



150046



080001

SOLID RIGATA

Fabric with a firm structure, of medium texture, with fine vertical stripes in full colour that form the structure of the whole piece.

CODE: 1102231P00000

COMPOSITION
65% Baby Alpaca
32% Wool
3% Nylon

WIDTH
150cm.

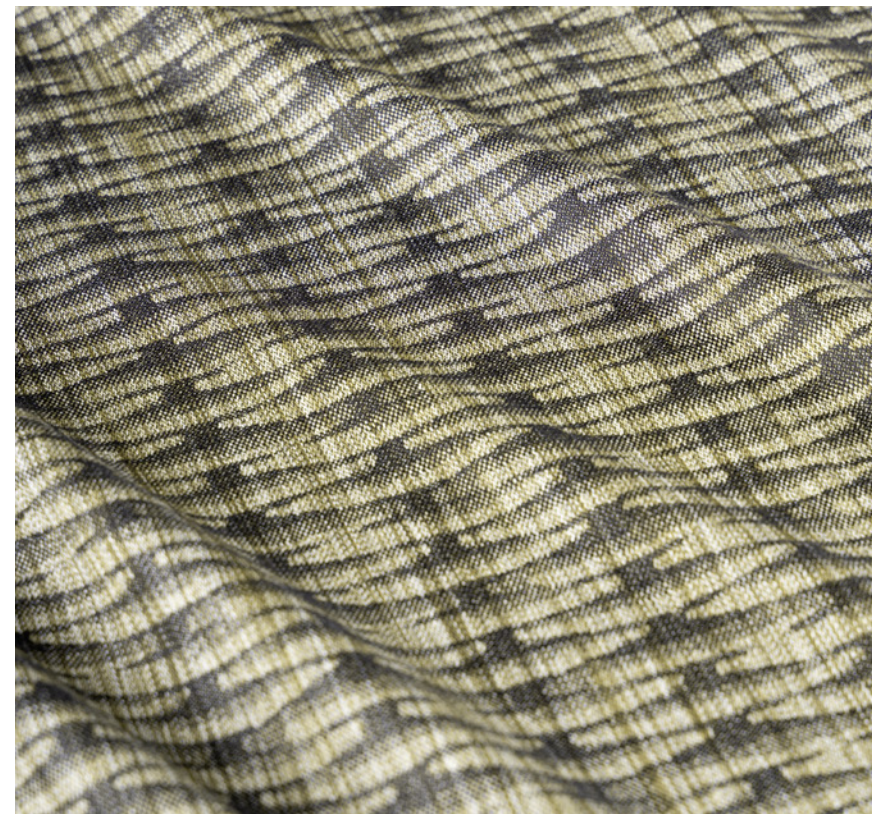
WEIGHT
460gr.



XXC0001



XXC0002



XXC0003

BRUSHSTROKE JACQUARD

A lightweight, soft, smooth and shiny fabric with a brushed effect on the surface, perfect for creating contemporary garments.

CODE: A100071M03000

COMPOSITION
52% Bamboo
34% Baby Alpaca
14% Silk

WIDTH
150cm.

WEIGHT
295gr.



XXC0001

WOOD PATTERN JACQUARD

This light, smooth fabric with a special lustre imitates the look of wood and is ideal for creating modern ensembles.

CODE: A100071M04000

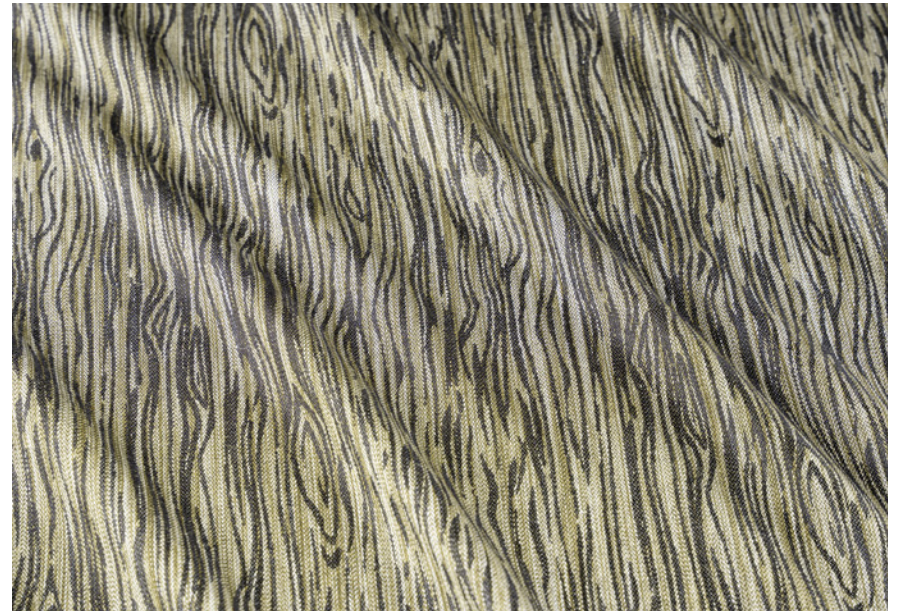
COMPOSITION
52% Bamboo
34% Baby Alpaca
14% Silk

WIDTH
150cm.

WEIGHT
295gr.



XXC0002



XXC0003



340029



470001



440178



080001

LIGHTWEIGHT DRAP

A silky, lightweight worsted baby alpaca drape fabric that is soft to the touch, drapes elegantly and is breathable. This makes it ideal for lightweight garments.

CODE: 1202151P00000

COMPOSITION
100% Baby Alpaca

WIDTH
150cm.

WEIGHT
405gr.

WHAT MAKES ALPACA GARMENTS **SO UNIQUE?**



Excellent appearance
and durability



Efficient humidity
absorption



Incredibly soft
touch



High performance in
extreme weather
conditions



FIND OUT WHY **WE LOVE USING**
ALPACA FIBRE IN OUR PRODUCTS.



DISCOVER **PACOMARCA**

Our scientific research station dedicated
to the genetic improvement of the alpaca.





INCALPACA TPX S.A.

Calle Cóndor 100, Sachaca Arequipa- Perú
T-51 54 603000

Juan Pablo Rivera
Commercial Director
jprivera@incalpaca.com

Claudia Fuentes
Woven Division Sales Manager
cfuentes@incalpaca.com

incalpaca.com

