

RE>UP^*CYCLE*

by  INCALPACA

^ The 80% of pollution sources for the oceans come from activities that take place outside them, being the first one plastic waste.

In a context where

fashion is the second pollution industry

it is vital to find ways to

**reuse natural fibers to create a
conscious, circular,
and sustainable fashion >**



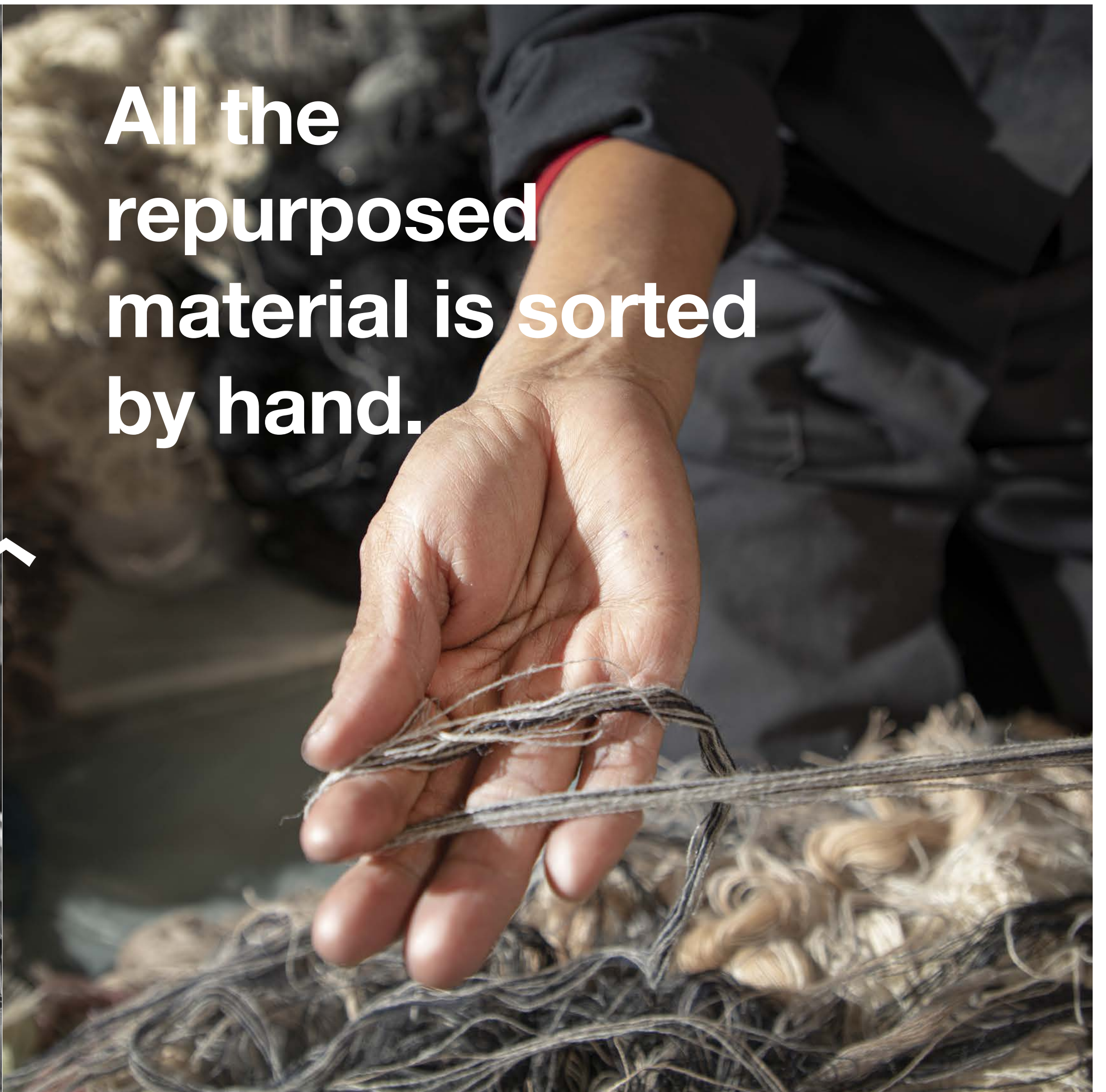
» **At Incalpaca we have developed a highly specialized unit and system to create high-end, durable, and inimitable garments** from leftovers, scraps, deadstocks and wastage. Taking advantage of alpaca fiber's resilience and versatility. These offcuts without any re-process will end up in the landfills.



CLE RE>UP~CYCLE RE>UP~CYCLE RE>UP~CYCLE



All the
repurposed
material is sorted
by hand.



➤ Based on color and composition, **creating one-of-a-kind production batches.**

» **We produce
120,000 kilograms
of recycled and
upcycled yarn
per year.**



Impact:

**We save energy
and water.
Reduce
the consumption
of raw materials.
Reduces textile
waste textile.**

P~CYCLE RE>UP~CYCLE RE>UP~CYCLE RE



We *RECYCLE* and *UPCYCLE* alpaca, wool and blends with nylon.

We do not recycle cotton, acrylic (synthetics in general).

And we buy 85% of offcuts from other companies in order to reach the annual quote, helping other companies in their recycling efforts.



**We create high-end, durable
and sustainable garments, such as
throws, fabrics, rugs and coats.**



RE>UP~CYCLE RE>UP~CYCLE RE>UP~CYCLE



What is *RECYCLE*?

Process where objects are transformed into new materials.



At Incalpaca we use selvedge from woven fabrics, deadstock yarn and swatches, and recycled polyester.

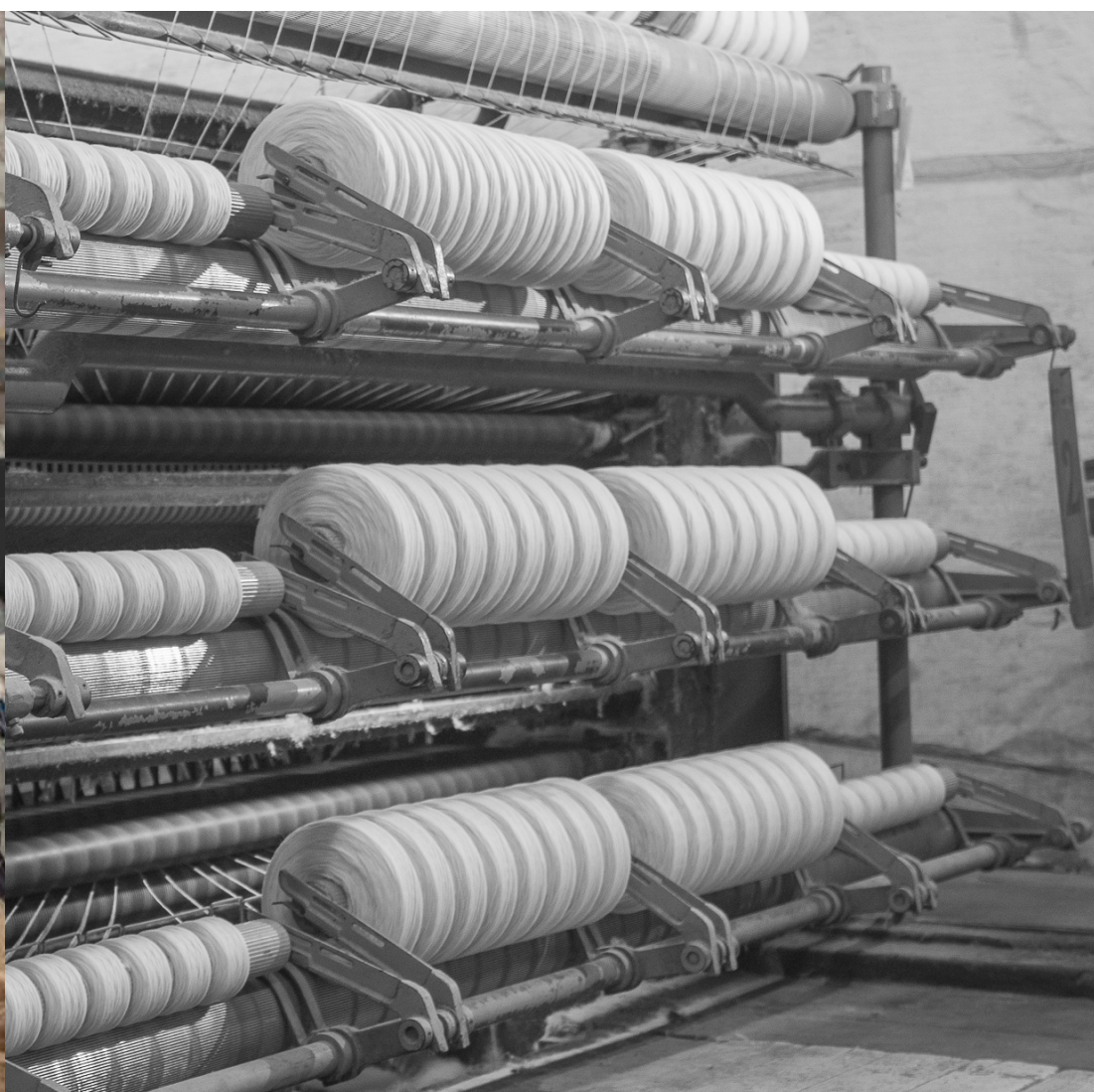
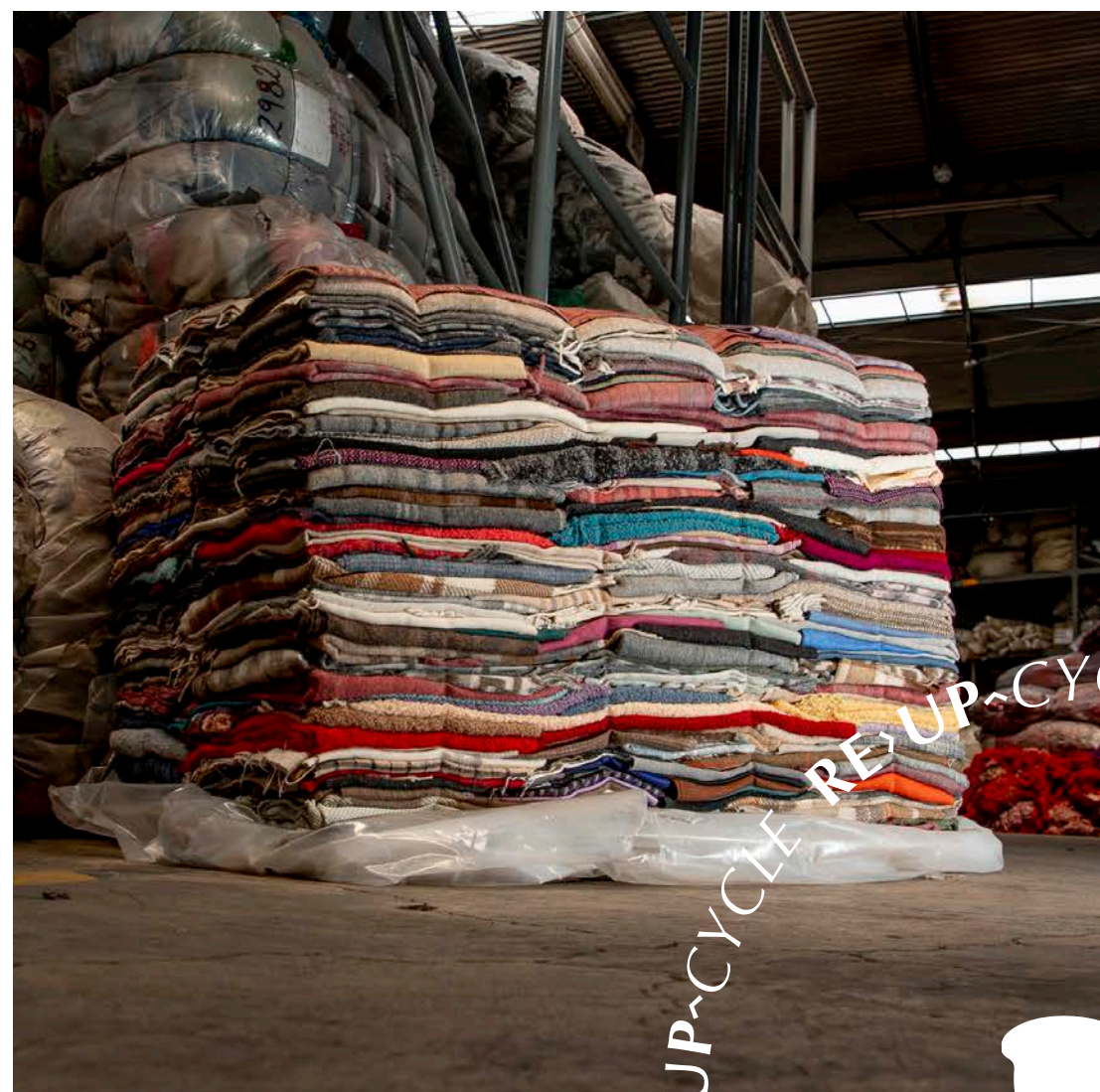
What is *UPCYCLE*?

Also known as "creative recycling", it involves repurposing waste to create something new and useful.



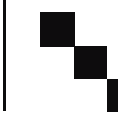
At Incalpaca we use noils, extremely short fibers and scrap materials to create durable garments that would otherwise be waste and pollution.





Technical details

- The percentage of recycled material used in each garment depends on each model and the customer requirements.
- It is possible to use recycled nylon.
- As each batch is sorted manually, color and composition may vary slightly from lot to lot.



Incalpaca TPX S.A. | Calle Cóndor 100, Sachaca Arequipa-Perú
T-51 54 603000

info@incalpaca.com

incalpaca.com

