



NATURE

OUTERWEAR

FW 23-24

CATALOGUE



NATURE

Inspired on the different tones of nature.

PERFORMANCE:



ECO



BOUCLE



JACQUARD



BULKY



SHINY



REVERSIBLE

CARE INSTRUCTIONS:



DRY CAN ONLY



LADIES BABY SURI / SILK LONG COAT

LADIES LONG COAT, WITH BIG COLLAR, DECORATIVE INTERNAL PIPING, 100%BEMBERG LINING AND COVER SNAP, INSERTED POCKETS AT SEAMS.

CODE:
H301787M0000

COMPOSITION:
92% Baby Suri
Alpaca 8% Silk

SIZE:
S

PERFORMANCE:



H240100





LADIES SURI LONG COAT IN TWO FABRICS

LADIES LONG COAT, WITH COLLAR IN LONG HAIR SURI FABRIC, BODY WITH SPAZZOLINO FABRIC, DECORATIVE INTERNAL PIPING, 100% BEMBERG LINING AND COVER SNAP.

CODE:

H501737M0101

COMPOSITION:

55% Wool
40% Alpaca Suri
5% Nylon

SIZE:

S

PERFORMANCE:


H350016





LADIES SURI ALPACA SHORT PADDING COAT

LADIES SHORT COAT, SYNTHETIC PADDING, DECORATIVE INTERNAL PIPING, 100% BEMBERG LINING, PICKSTITCH, COVER SNAP WITH DECORATIVE STITCH OVER IT, INSERTED POCKETS AT SEAMS.

CODE:

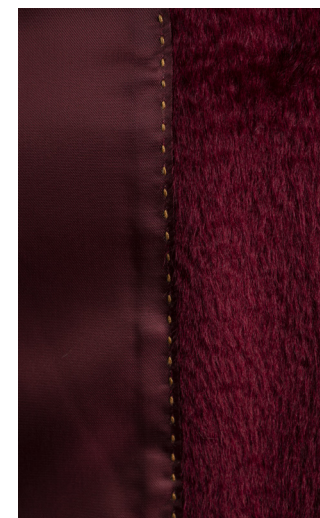
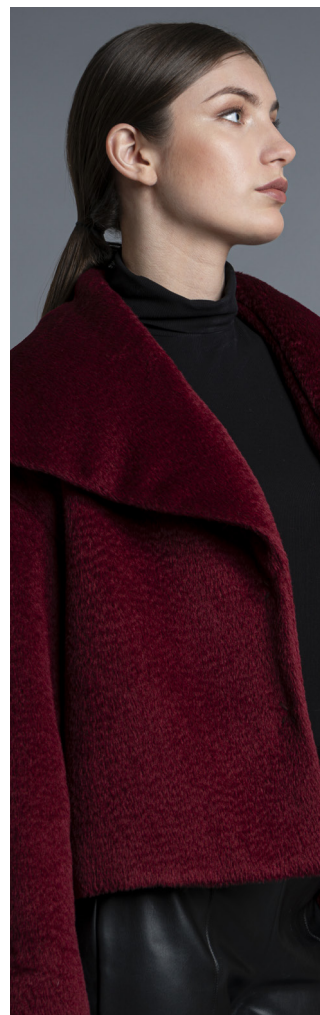
H301794M0000

COMPOSITION:

68% Baby Suri
Alpaca 29% Wool
3% Nylon

SIZE:

S

PERFORMANCE:


H120041



LADIES BABY SURI / SILK LONG SWING COAT

LADIES LONG SURI COAT, 100%BEMBERG LINING, DECORATIVE INTERNAL STITCH AND PIPING
INSERTED POCKETS AT SEAMS.

CODE:

H301786M0000

COMPOSITION:

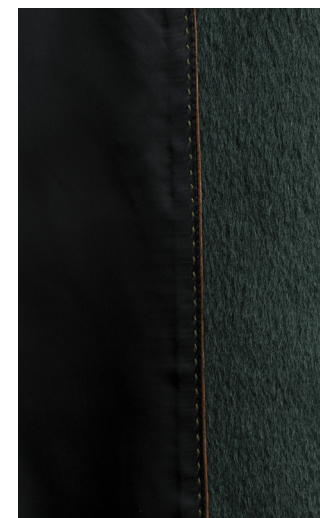
92% Baby Suri
Alpaca
8% Silk

SIZE:

S

PERFORMANCE:


H420193



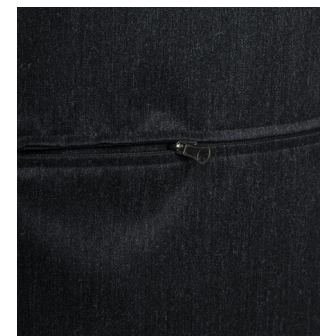
LADIES NATURAL WATERPROOF JACKET

LADIES JACKET, WITH HOOD, ZIPPER AT FRONT PLACKET, FRONT PATCH POCKETS WITH PLAPET, POCKET IN BACK TO PACK THE GARMENT IN THIS, UNLINED, IN NATURAL WATER REPELLENT FABRIC.

CODE:
H101775M0000

COMPOSITION:
70% Wool
30% Alpaca
Superfine

SIZE:
S



9A0003

LADIES NATURAL WATERPROOF BUCKET HAT

STITCHED BUCKET HAT, WITH ALPACA PADDING, UNLINED, IN NATURAL WATER REPELLENT FABRIC.

CODE:

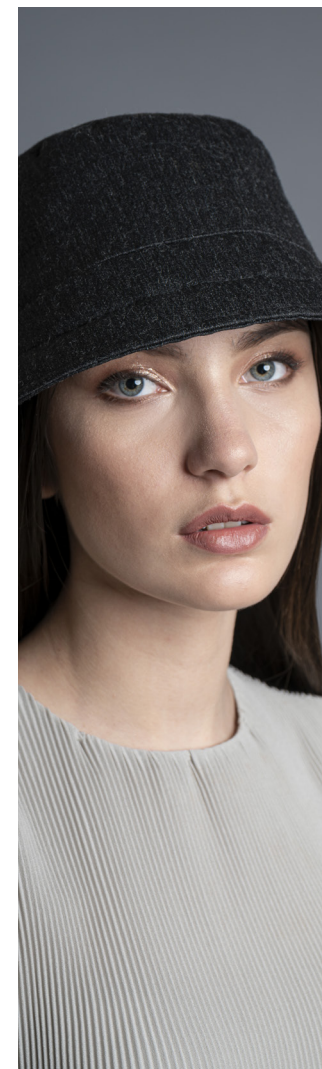
K100047M0000

COMPOSITION:

70% Wool
30% Baby Alpaca

SIZE:

0



9A0003



LADIES OVERLAPPED KNITTED COLLAR AND KNITTED SLEEVES ECO COAT

LADIES ECO COAT, ZIPPER AT FRONT PLACKET, WITH METAL SNAPS, 100% BEMBERG LINING,
OVERLAP KNITTED COLLAR AND KNITTED SLEEVES IN ALPACA SF YARN.

CODE:

B201302M0000

COMPOSITION:

67% Alpaca Eco
33% Wool Eco

SIZE:

S

PERFORMANCE:


8A0384



LADIES BABY ALPCA AND BOUCLE LONG COAT WITH HOOD

LADIES LONG COAT WITH HOOD, BODY IN BABY ALPACA FABRIC, APPLICATION OF BOUCLE FABRIC IN HOOD, CHEST/CUFFS AND WELT POCKETS, ZIPPER AT FRONT PLACKET, 100%PIMA COTTON LINING.

CODE:

S100884M0000

COMPOSITION:

67%Baby Alpaca
32%Wool 1%Nylon
+

82% Suri Alpaca

15% Wool 3%
Nylon

SIZE:

S



XXC0001



LADIES ECO LONG COAT WITH HOOD

LADIES LONG COAT, WITH HOOD IN ECO FABRIC, ZIPPER AT FRONT PLACKET, UNLINED, BINDING SEAMS, FRONT PATCH POCKETS.

CODE:

H101790M0000

COMPOSITION:

55% Baby Alpaca
Eco 10% Seda
35% Wool

SIZE:

S

PERFORMANCE:


XXC0001





QUILTED MEN'S CAMO COAT

QUILTED MEN'S COAT, WITH HOOD, BABY ALPACA KNITTED ACCESSORY FOR FAKE INSIDE VEST AND CUFFS, FRONT ZIPPER AND METAL SNAPS.

CODE:
H101788M0000

COMPOSITION:
100% Baby Alpaca

SIZE:
M

PERFORMANCE:



XXC0003



ECO MEN'S REVERSIBLE COAT WITH HOOD

ECO MEN'S REVERSIBLE CHECK COAT WITH HOOD,
AND FRONT HORN BUTTONS.

CODE:

H101738M0101

COMPOSITION:

97% Alpaca
Superfine
3% Wool

SIZE:

M

PERFORMANCE:



XXC0003

MEN'S NATURAL WATERPROOF DETACHABLE COAT

MENS QUILTED COAT, WITH DETACHABLE HOOD AND SLEEVES, FRONT METAL SNAPS, ALPACA KNITTED ACCESSORIES FOR COLLAR AND CUFFS, IN NATURAL WATER REPELLENT FABRIC.

CODE:

H101797M0000

COMPOSITION:

70% Wool
30% Baby Alpaca
70% Wool

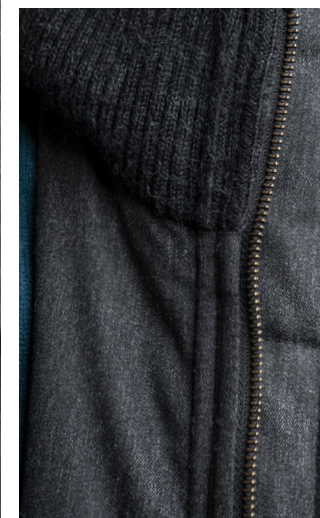
30% Alpaca
Superfine

SIZE:

M



XXC0001





MEN'S STAND COLLAR COAT

MEN'S STAND COLLAR COAT, FRONT METAL SNAPS, YOKE
AND BELT ON THE BACK AND PICKSTITCH.

CODE:
H101793M0000

COMPOSITION:
100% Baby Alpaca

SIZE:
M



1200067





MEN'S TRENCH COAT

MEN'S TRENCH COAT, HIDDEN BUTTONS,
LINED SLEEVES, TAB CUFFS.

CODE:
H101805M0000

COMPOSITION:
67% Baby Alpaca
32% Wool
1% Nylon

SIZE:
M



510001



MEN'S REVERSIBLE ECO COAT WITH LAPELS

MEN'S REVERSIBLE ECO COAT WITH LAPELS CONTRAST COLOR, FRONT BUTTONS, PATCH POCKETS BOTH SIDES AND BACK VENT, MACHINE HAND IMITATION FINISHING.

CODE:

H101804M0000

COMPOSITION:

96% Baby Alpaca
4% Wool

SIZE:

M

PERFORMANCE:



XXC0001





ALPACA QUALITIES

ALPACA SUPERFINE:

26-27 microns curly hair fiber.
It represents 40% of total alpaca production.

BABY SURI ALPACA:

22-23 microns long, silky and sparse fiber.
It represents 0.5% of total alpaca production.

BABY ALPACA:

22-23 microns It has 22 natural colors.
It represents 25% of total alpaca production.

ROYAL ALPACA:

18-19 microns the finest fiber of huacaya.
It represents 2% of total alpaca production.



ALPACAS

save energy, have a history, are gentle with the land, products are unique.



INCALPACA TPX S.A. | Calle Cóndor 100, Sachaca Arequipa-Perú
T-51 54 603000

info@incalpaca.com

incalpaca.com